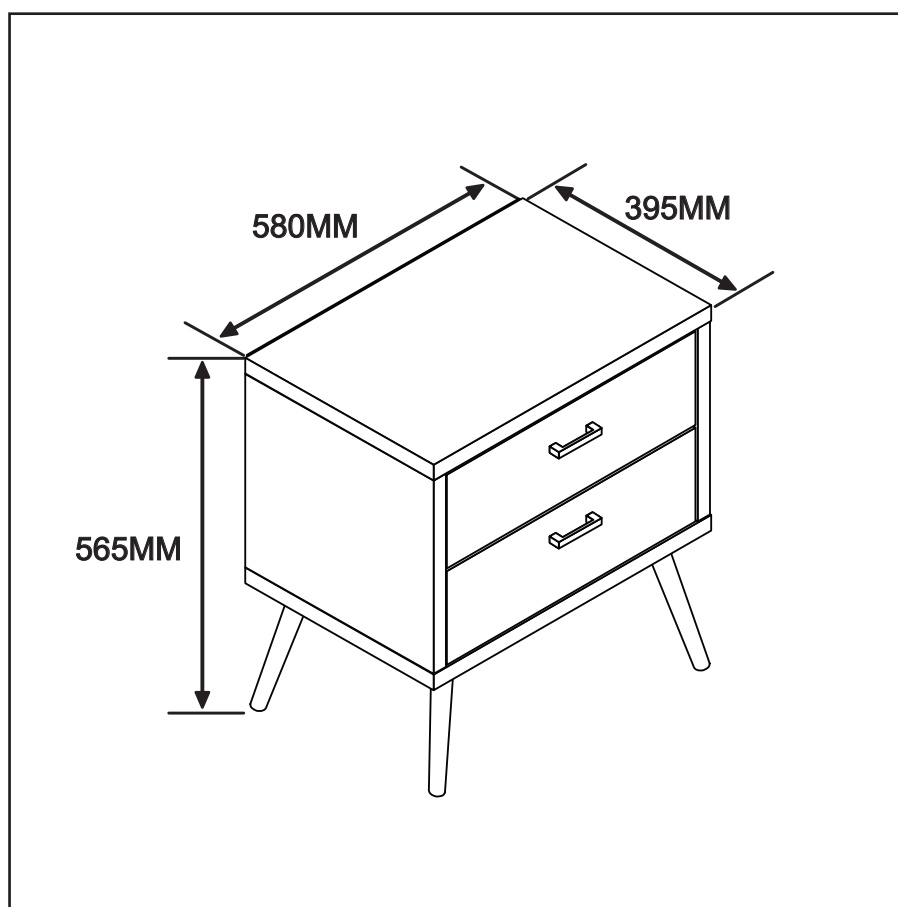




ASSEMBLY INSTRUCTION
KORI 2 DRAWER BEDSIDE
ITEM CODE 58235

Imported by Amart Furniture Pty Ltd, Qld, Brisbane Australia.
For any assistance with assembly or for missing parts please phone
Amart Furniture, Customer Service Free call 1800 351 084

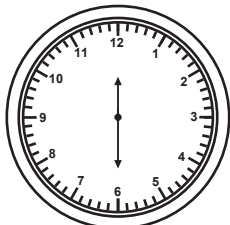

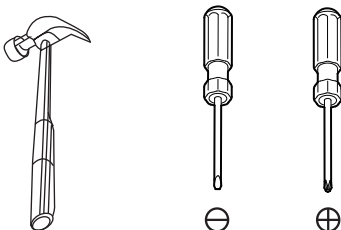




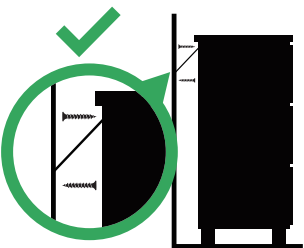

Imported by Amart Furniture Pty Ltd, Qld, Brisbane Australia.
For any assistance with assembly or for missing parts please phone
Amart Furniture, Customer Service Free call 1800 351 084

PRE-ASSEMBLY PREPARATION

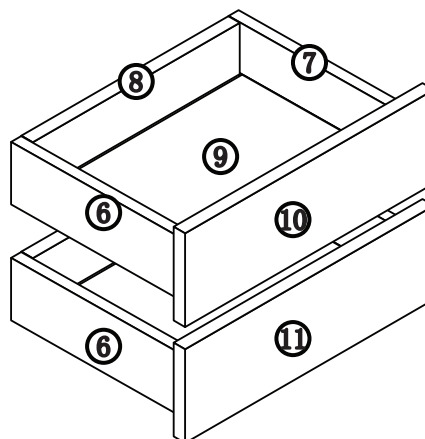
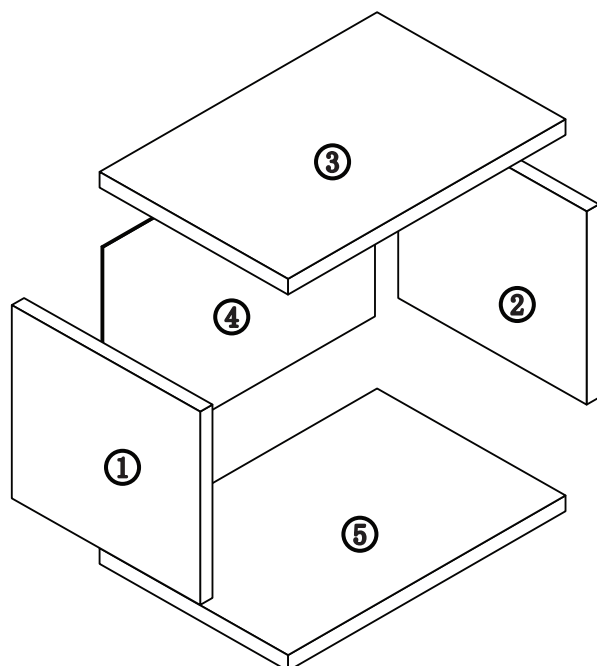
Before you start:




1. Choose a clean, level, spacious assembly area. Avoid hard surfaces that may damage the product
2. Take care when lifting. Product should be assembled as near as possible to the point of use
3. Ensure that you have all required contents for complete assembly
4. Always read the assembly instructions carefully before beginning assembly.
5. Keep all hardware parts and packaging out of reach of small children.
6. Do not over tighten the screws and bolts as this may damage the threads


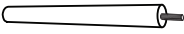

	 x 1
ALLOW 30 MINUTES	PEOPLE REQUIRED
	
TOOLS REQUIRED	

 WARNING		
		<p>Children have died from furniture tipover.</p> <ul style="list-style-type: none">• ALWAYS secure it with an anchor device.• NEVER allow children to stand, climb or hang on drawers, doors, or shelves.• NEVER open more than one drawer at a time.• Place heavy items down low <p>NEVER put a TV on this furniture </p> <p>This is a permanent label. Do not remove!</p>


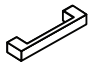



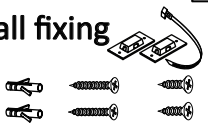

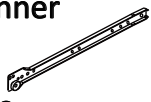
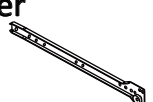
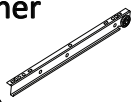
EXPLODED EXAMPLE




A cam pin  M7x39mm Ax12	B cam lock  M15x12mm Bx12	C dowel  M8x30mm Cx8
---	---	--

D screw  M5x40mm Dx8	E leg  M34x200mm Ex4	F metal plate for leg  M72x75mm Fx4
--	--	---

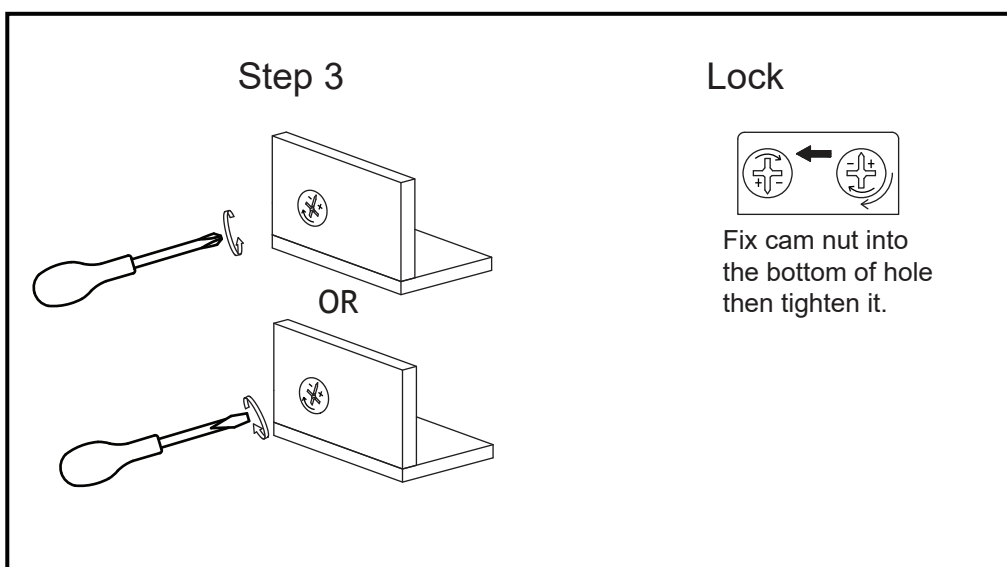
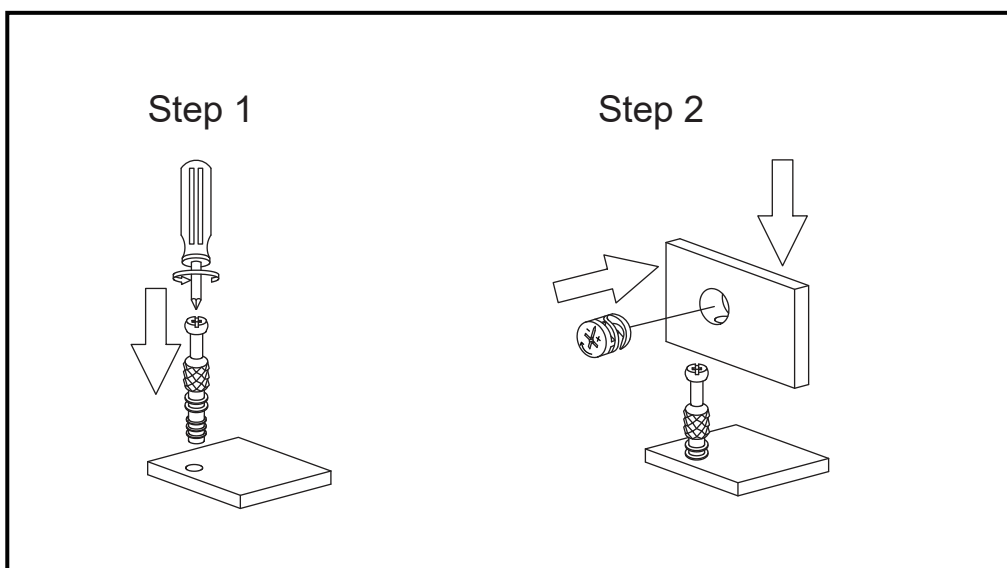
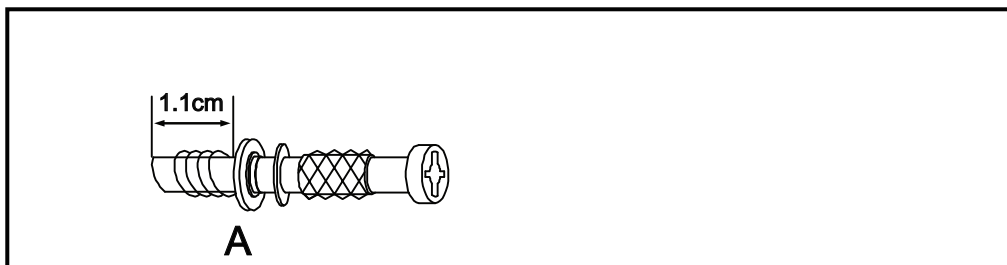
1	LEFT SIDE PANEL
2	RIGHT SIDE PANEL
3	TOP PANEL
4	BACK PANEL
5	BOTTOM PANEL
6	DRAWER LEFT PANEL
7	DRAWER RIGHT PANEL
8	DRAWER BACK PANEL
9	DRAWER BOTTOM PANEL
10	DRAWER FRONT PANEL TOP
11	DRAWER FRONT PANEL BOTTOM

G screw  M4x16mm Gx20	H handle  Hx2	I screw  M4x19mm Ix4	J screw  M3x16mm Jx10	K screw  M3.5x14mm Kx24
L wall fixing  M4x30mm M3.5x14mm Lx1	M screw  M5x50mm Mx4	CL runner  300mm CLx2	CR runner  300mm CRx2	DL runner  300mm DLx2

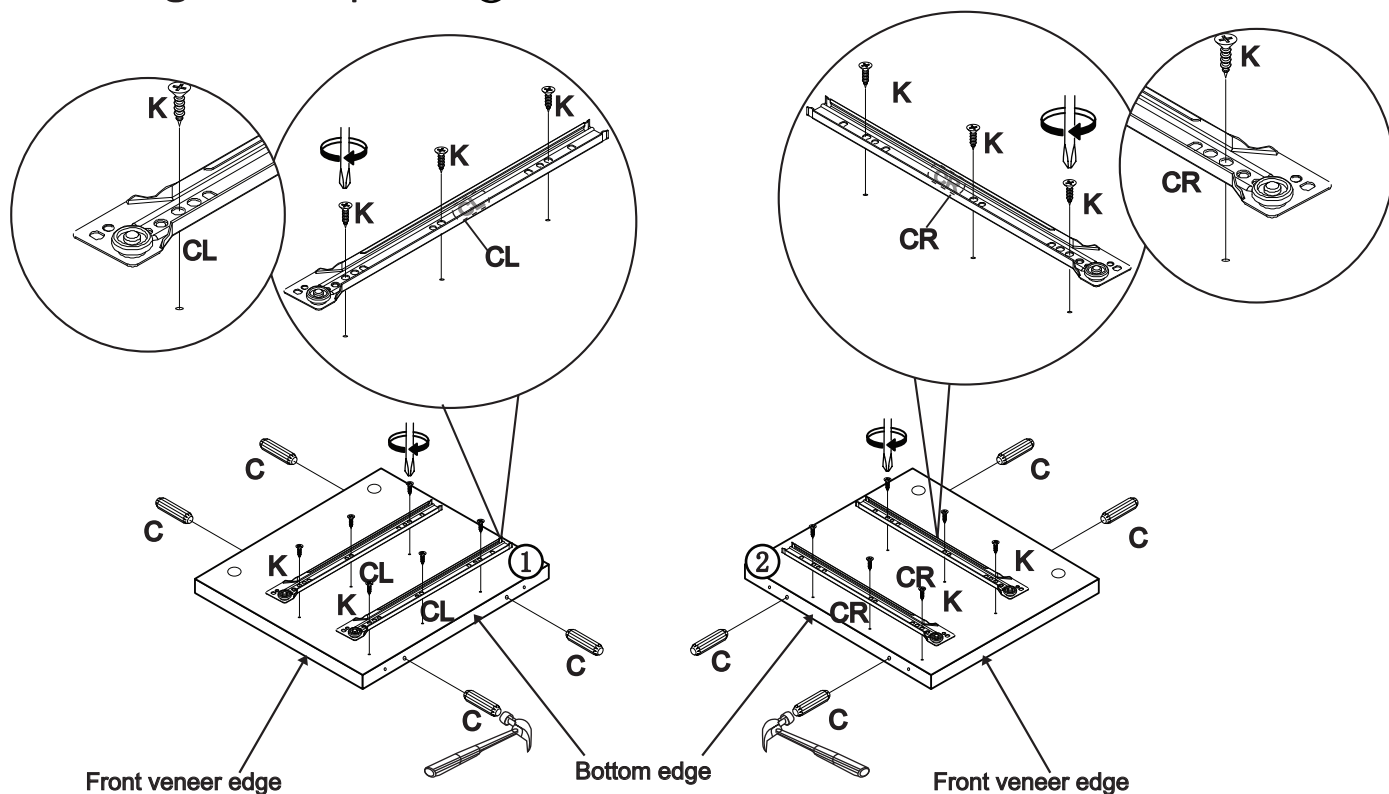
DR runner  300mm DRx2				
---	--	--	--	--

PART NUMBER	QTY	DIMENSIONS (MM)
1	1	394x324x18
2	1	394x324x18
3	1	580x395x18
4	1	570x356x2.5
5	1	580x395x18
6	2	330x110x15
7	2	330x110x15
8	2	483x110x15
9	2	491x322x2.5
10	1	533x154x15
11	1	533x154x15

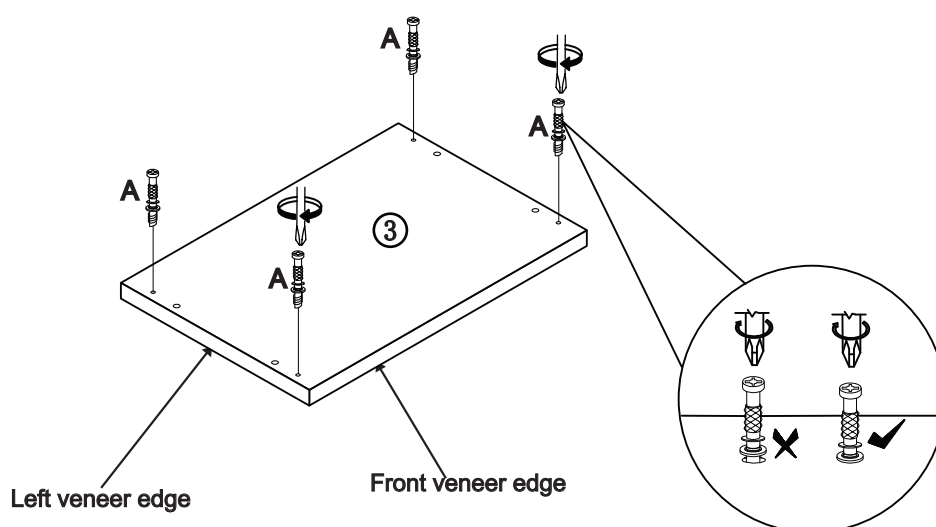
CAM LOCK INSTALL METHOD AS FOLLOWS



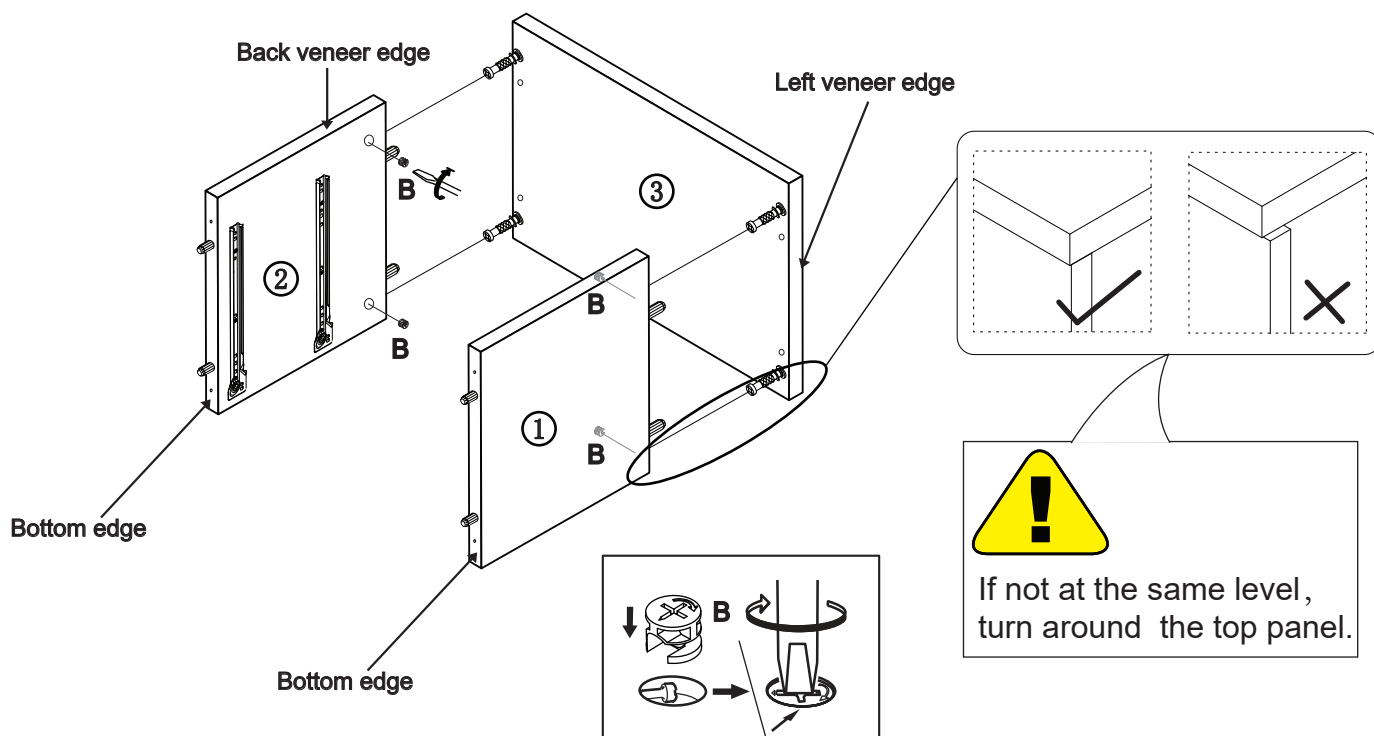
STEP 1: Fix runners ④ ⑤ to left side panel ① and right side panel ② with screws ⑥. Insert dowel ⑦ to left side panel ① and right side panel ②.



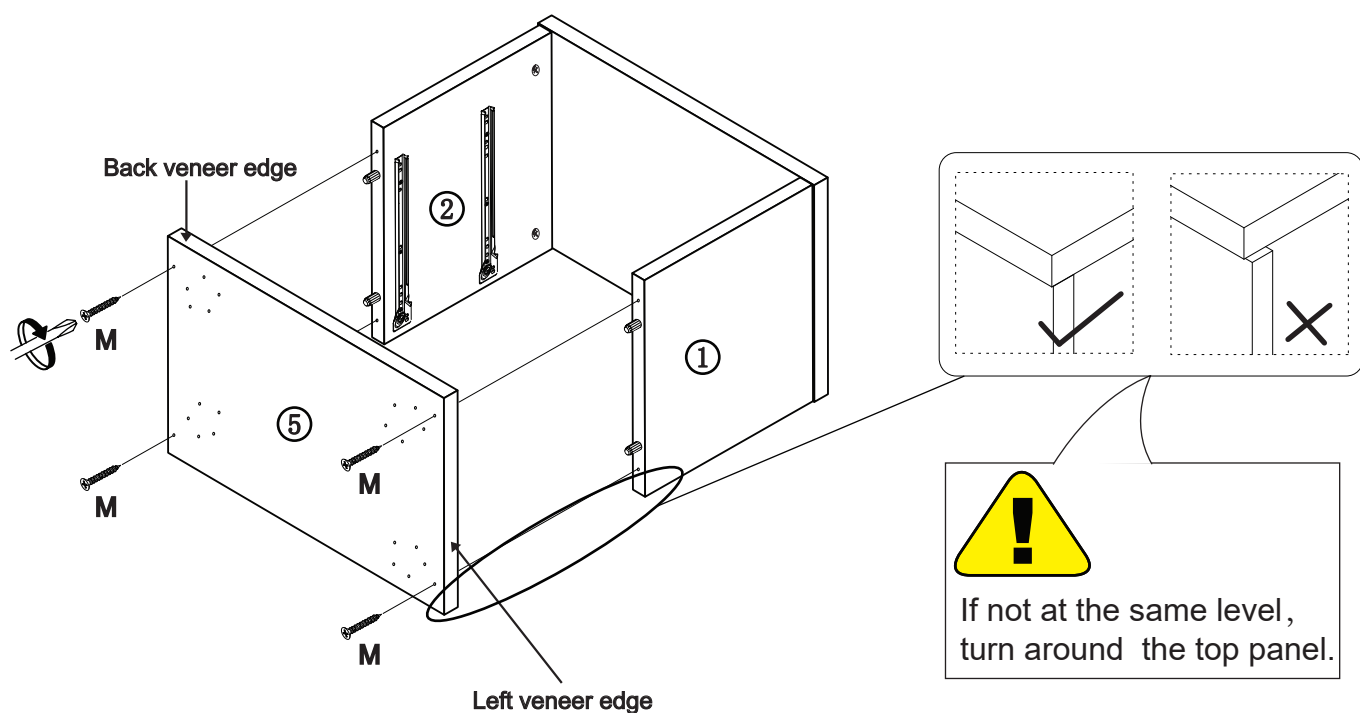
STEP 2: Fix cam pin ⑧ to top panel ③.



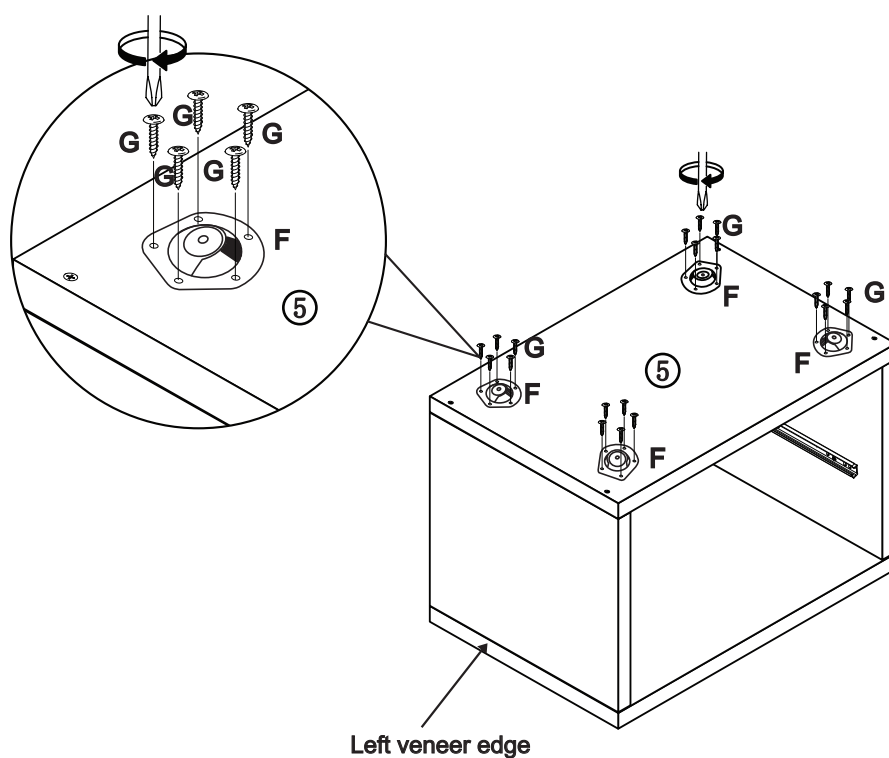
STEP 3: Attach top panel ③ to left side panel ① and right side panel ② with the cam locks ④ .



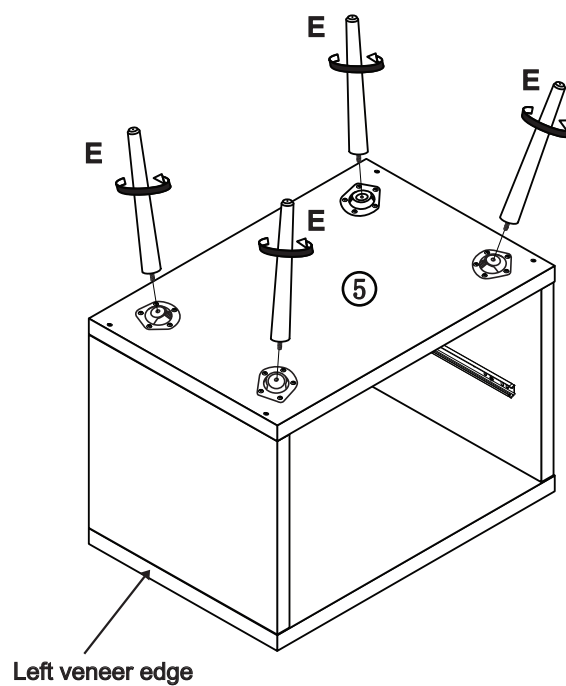
STEP 4: Attach bottom panel ⑤ onto existing unit with screws ⑥ .



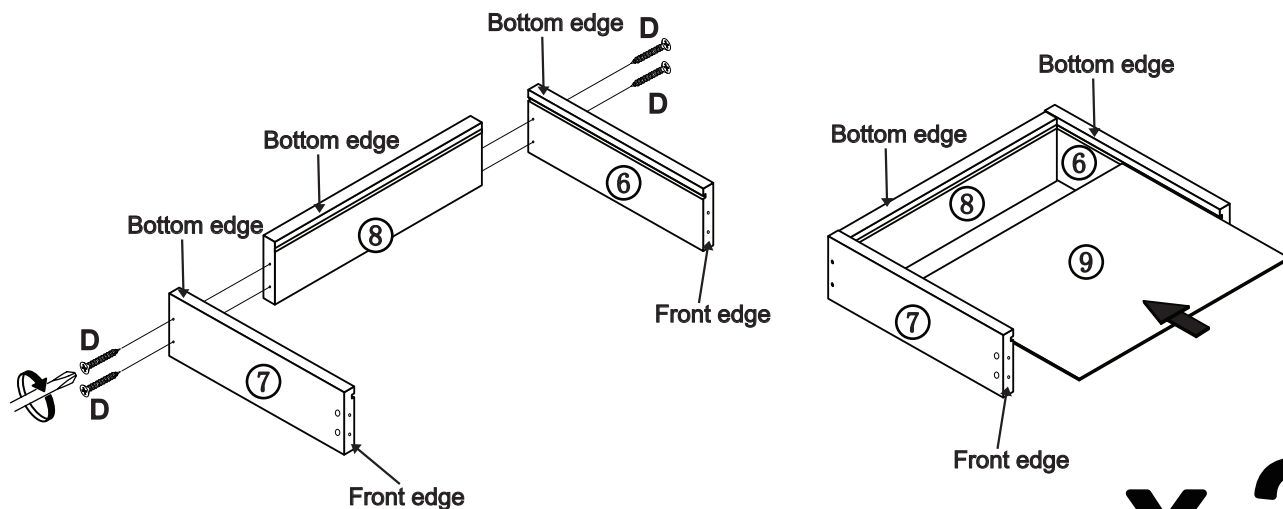
STEP 5: Fix metal plates ⑥ to bottom panel ⑤ with screws ⑦ .



STEP 6: Fix legs ⑧ to the metal plates ⑥ .

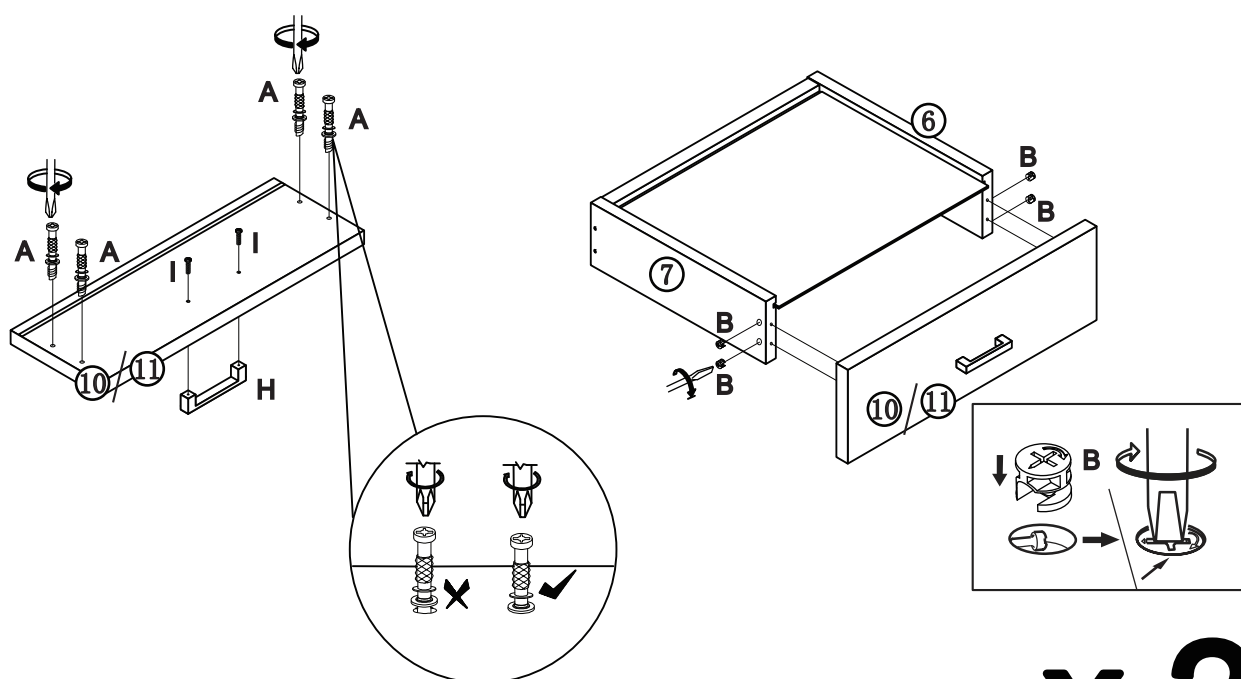


STEP 7: Attach drawer left panel ⑥ and drawer right panel ⑦ to drawer back panel ⑧ with screw ①. Insert panel ⑨ to the body of drawer.



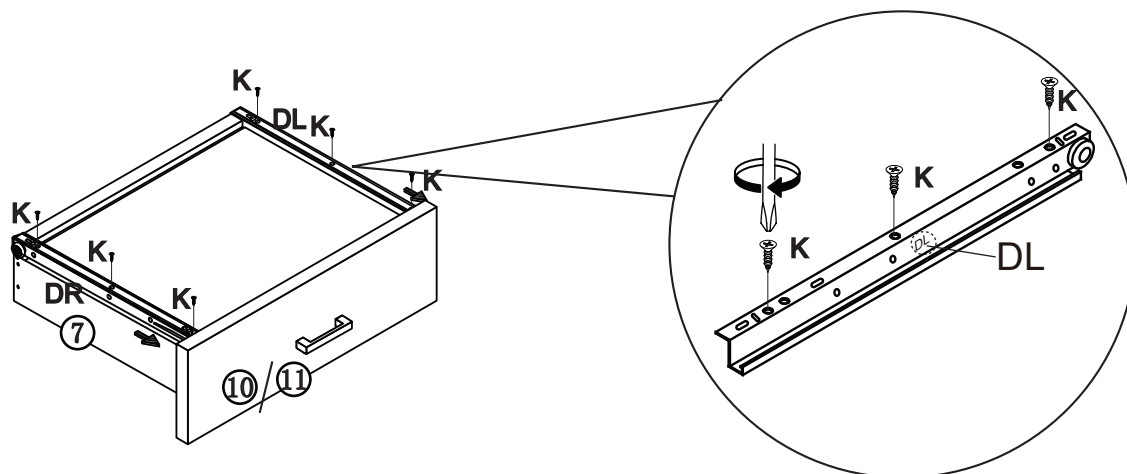
x 2

STEP 8: Fix cam pin ④ to drawer front panel top ⑩ and drawer front panel bottom ⑪. Fix handles ⑧ to drawer front panel top ⑩ and drawer front bottom ⑪ with screw ①. Attach drawer front panel top ⑩ and drawer front panel bottom ⑪ to the body of drawer with cam lock ③.

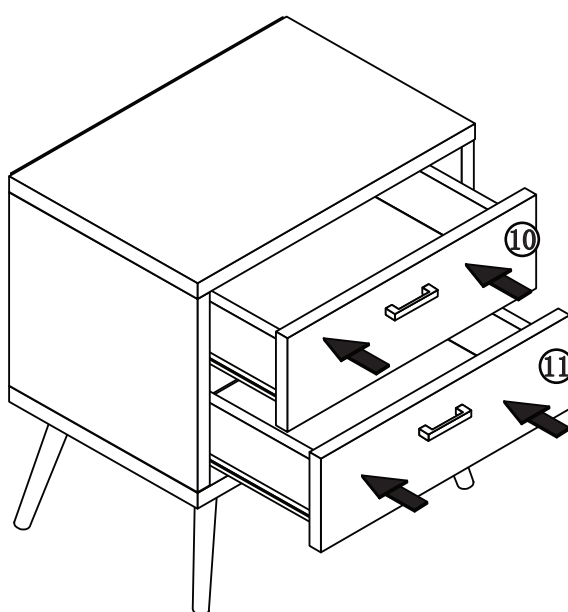


x 2

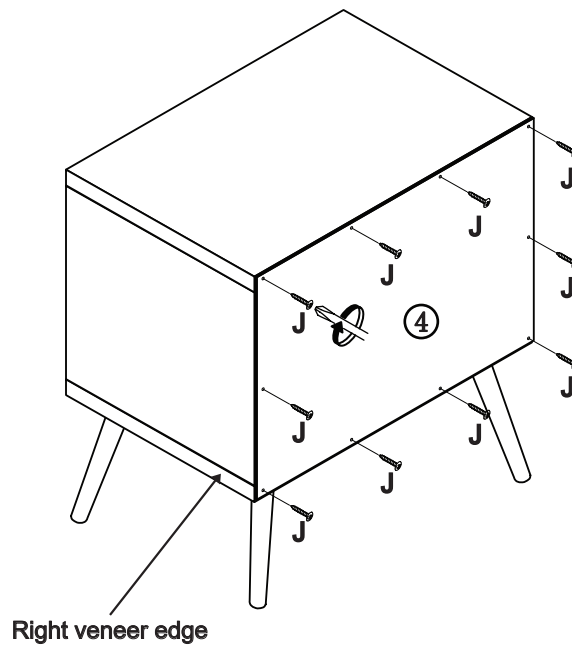
STEP 9: Install runner ⑩⑪ to bottom of drawer with screws ⑧.



STEP 10: Slide drawers into the unit.

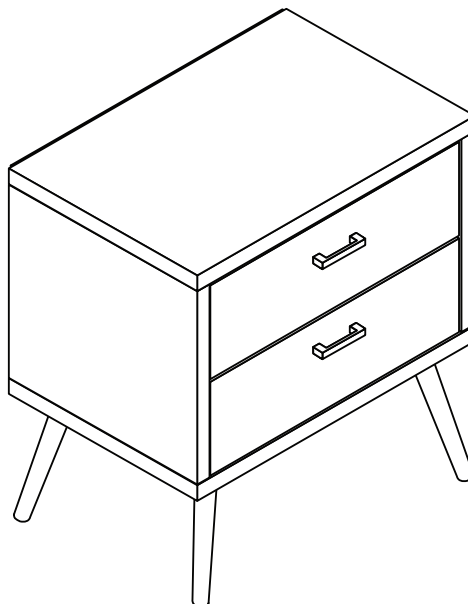


STEP 11: Attach back panel ④ onto existing unit with screws ⑪.



ASSEMBLY COMPLETE

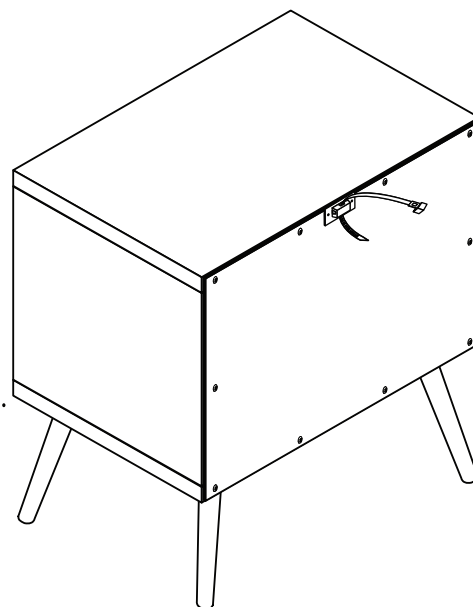
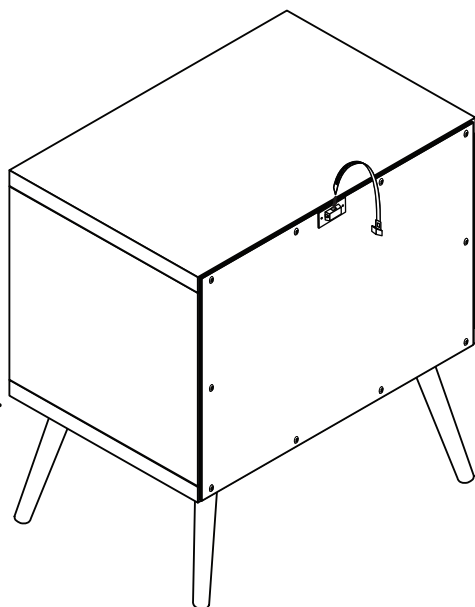
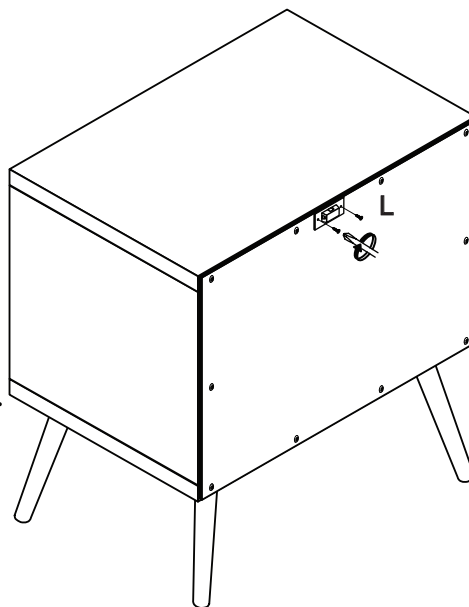
DO NOT PUSH OR DRAG THIS FURNITURE – IT WILL CAUSE DAMAGE TO THE LEGS



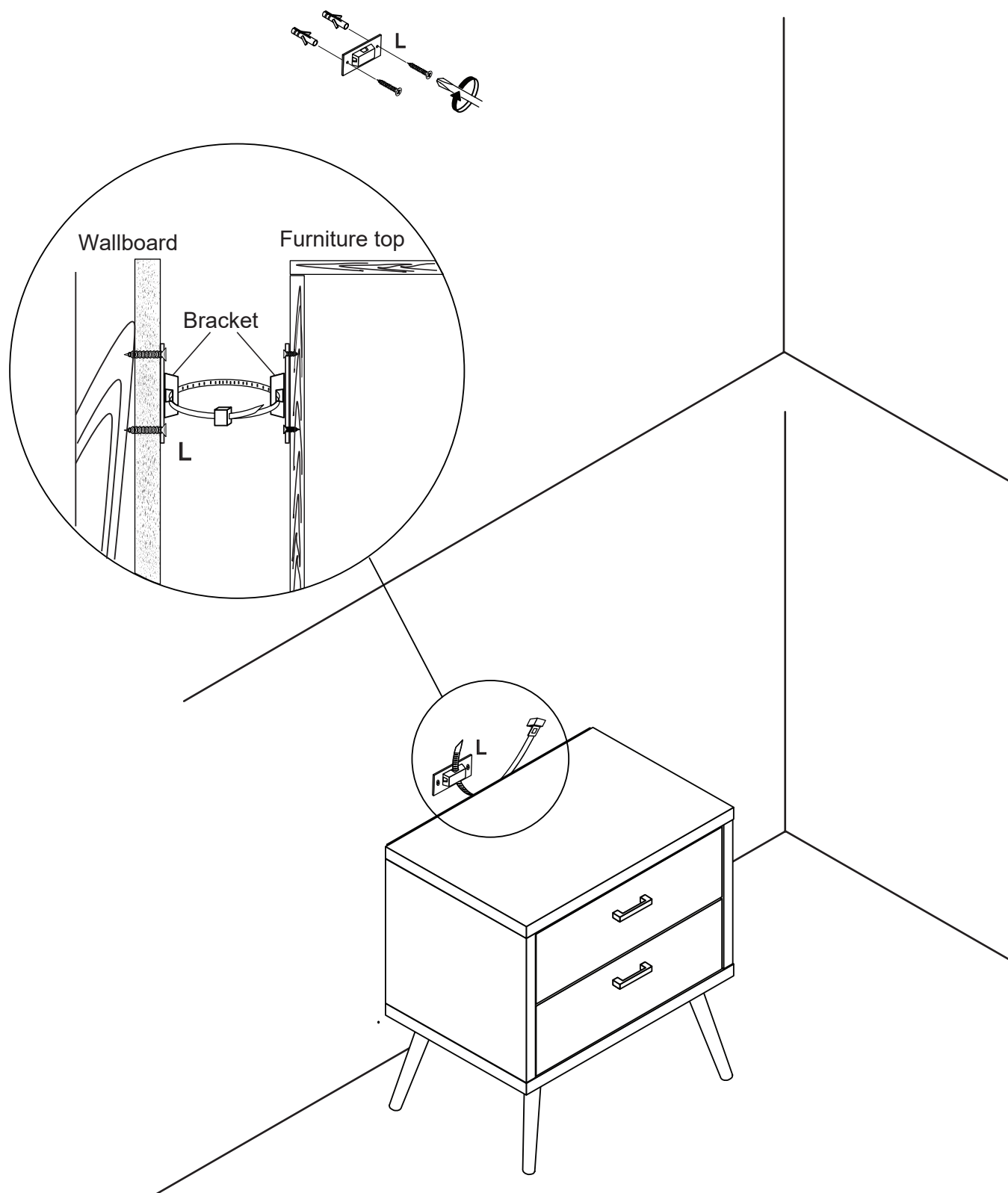


STEP 1: Fix bracket to back panel using screws M3.5*14MM .
Put plastic string into bracket.

NOTE - This product must be fixed to a wall. Please ensure the correct wall fixings are used. Failure to do so may result in personal injury or cause property damage if the product topples over. Please note that the screws are only suitable for plasterboard wall materials, please contact local hardware store for corresponding screws for other wall materials.



STEP 2: Fix bracket onto the wall using screws M4*30MM.
Join wallboard and the furniture with plastic sting.



PRODUCT CARE:

To protect your furniture, we suggest the following:

- *Avoid placing your furniture in direct sunlight.
- *Do not place furniture directly under windows.
- *Do not place sharp materials(knife, fork, etc) directly onto your furniture as sharp material may scrape and damage the finish.

Do not place material with high temperature directly onto the surface of your furniture.

- *Protective padding is strongly recommended when using your furniture .
- *Clean up spills quickly. Water left over a prolonged period of time may cause damage. Alcohol, perfume, nail polishes, aftershave and some medication may cause severe finish damage if not cleaned immediately.
- *Use a clean, soft, dry, lint free absorbant cloth to clean your furniture. Do not use any detergent as they may contain ingredients that may react and damage the finish.

NOTE: If the above care advise is not adhered to your product warranty may become void.